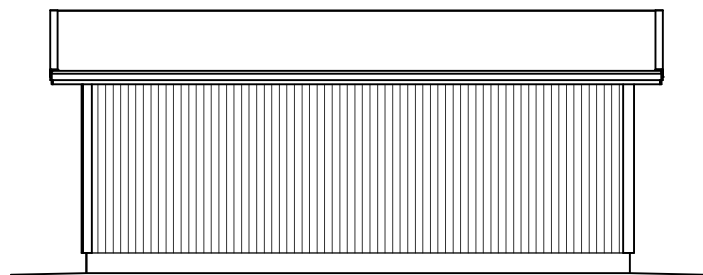
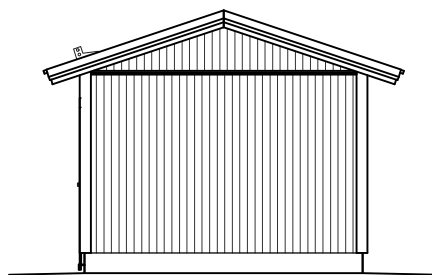


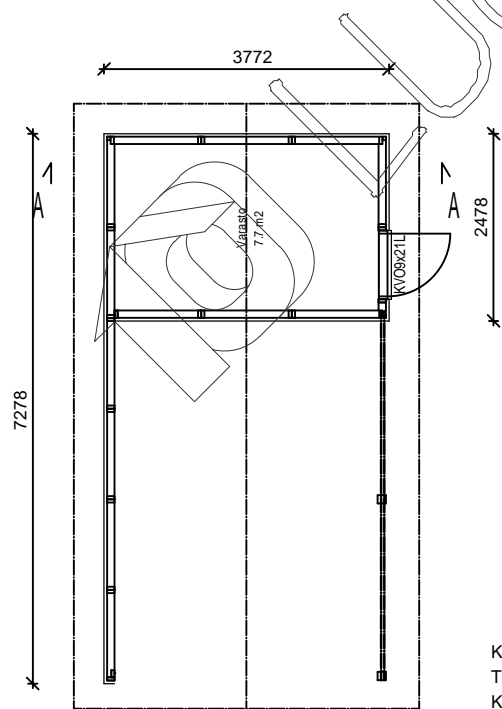
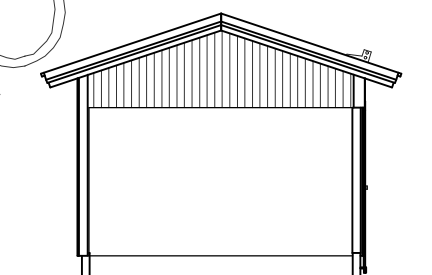
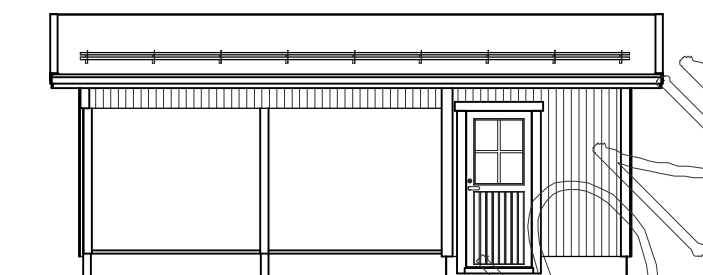
# Autokatos/varasto KP10



ILMANSUUNNAT ASEMAPIIROKSEN MUKAAN

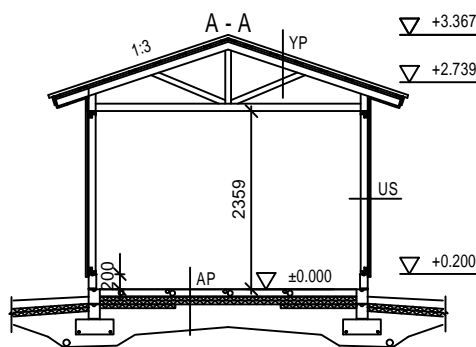


MATERIAALIT:  
 PELTI- / TILI- HUOPAKATE VÄRI:  
 IKKUNAT JA OVET VÄRI:  
 LOMALAUTA VÄRI:  
 NURKKA- JA OTSALAUDAT VÄRI:  
 SOKKELI VÄRI:



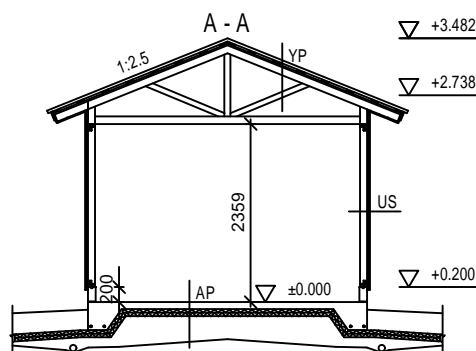
KERROSALA 9,3 m<sup>2</sup>  
 TILAVUUS 27 m<sup>3</sup>  
 KOKONAISALA 27,5 m<sup>2</sup>

PALOLUOKKA P3



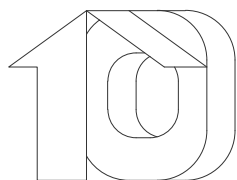
**RAKENTEET**

AP TERÄSBETONI 100mm + TER. STYROX 150/100mm TIIVISTETTY KARKEA KAPILAARIN ESTÄVÄ SORA >200mm	YP PELTIKATTO RUOTEET 32x100 TUULETURRIMA 22mm ALUSKATE KATTORISTIKKO K1200
US LOMALAUTA 20x120+20x120mm RUNKO 2x42x98 k1200	



**RAKENTEET**

AP REUNAVAHVISTETTU TERÄSBETONI- LAATTA + TER. STYROX 150/100mm TIIVISTETTY KARKEA KAPILAARIN ESTÄVÄ SORA >200mm	YP PELTIKATTO RUOTEET 32x100 TUULETURRIMA 22mm ALUSKATE KATTORISTIKKO K1200
US LOMALAUTA 20x120+20x120mm RUNKO 2x42x98 k1200	



Kymppitalit